



March 20, 2018

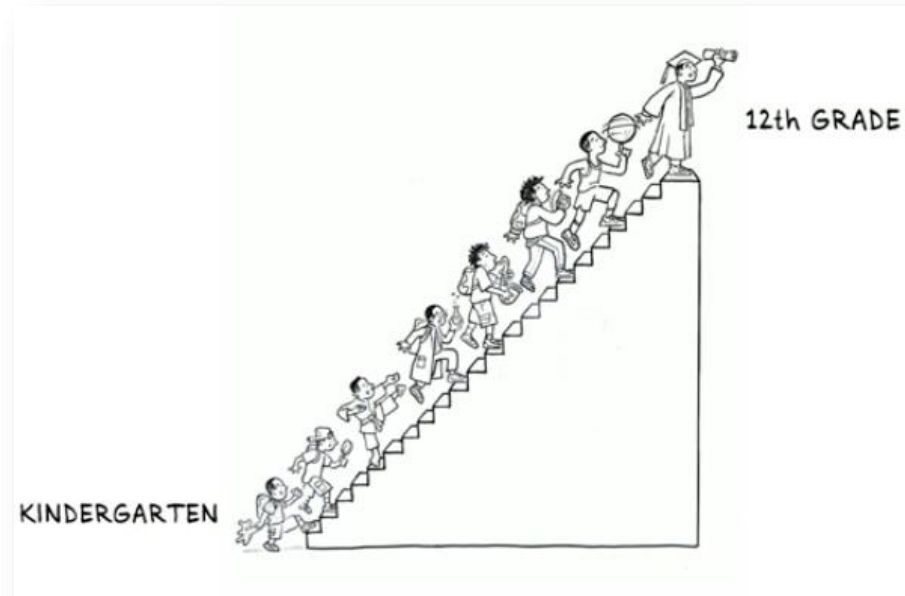
FSA/EOC/FCAT Science Parent Information Night

Franklin Academy
Sunrise Campus

- Gain a deeper understanding of the Florida Standards
- Expectations of the FSA including question types
- Sessions, times, and dates
- Break out sessions for specific information
 - Civics EOC
 - Algebra/Geometry EOC
 - 5th Science FCAT
 - 8th Science FCAT
 - Biology

What are the Florida Standards?

“A set of **clear, consistent and strong** academic standards that will help ensure Florida’s students graduate high school ready for success in **college, career and life.**”



Webb's Depth of Knowledge



Percentage of Points by Depth of Knowledge Level

Grade	DOK Level 1	DOK Level 2	DOK Level 3
3-11	10%-20%	60%-80%	10%-20%

Note: The Text-Based Writing component at grades 4-11 is a DOK level 3 task.

The Florida Standards Assessment (FSA)

- FSA is an authentic assessment that includes more than just multiple choice questions.
- Will prepare Florida students for success in college, career, and in life by emphasizing analytical thinking.
- Students will be expected to respond to multiple choice questions, create graphs, write and respond in different ways than on other traditional tests.
- Measures student mastery of the standards taught.
- Meets high quality standards for assessment, including reliability and validity for a variety of accountability purposes.
- Emphasizes critical thinking.

FSA Test Dates

Testing Window:	Test:	Test Mode:	Grade (s):
April 10-11	FSA ELA	Paper Based	3 rd
April 16- May 18	FSA ELA (Grades 4–8) and FSA Mathematics (Grades 3–8); Algebra, Geometry, Biology, Civics EOC	Computer Based	3 rd – 8 th
May 1 (5 th & 8 th) May 2 (5 th Gr Session 2)	NGSSS Science	Paper Based	5 th & 8 th

English Language Arts – Reading

Grade Level	Number of Days of Testing	Number of Sessions	Minutes per Session	Total Minutes per Grade Level
3*	2	2	80	160
4	2	2	80	160
5	2	2	80	160
6	2	2	85	170
7	2	2	85	170
8	2	2	85	170

Mathematics

Grade Level	Number of Days of Testing	Number of Sessions	Minutes per Session	Total Minutes per Grade Level
3*	2	2	80	160
4*	2	2	80	160
5	2	2	80	160
6	2	3	60	180
7	2	3	60	180
8	2	3	60	180

Reading		
Grade	Session 1	Session 2
3	1–31	32–60
4	1–31	32–60
5	1–30	31–60
6	1–28	29–62
7	1–31	32–62
8	1–32	33–62

Mathematics			
Grade/Subject	Session 1	Session 2	Session 3
3	1–32	33–64	N/A
4	1–32	33–64	N/A
5	1–32	33–64	N/A
6	1–22	23–44	45–66
7	1–22	23–44	45–66
8	1–22	23–44	45–66
Algebra 1	1–34	35–68	N/A
Geometry	1–34	35–68	N/A

Technology-Enhanced Items (FSA)



Multiple Choice Items

For these items, choose the **best** answer from the answer choices, and fill in one bubble for the correct answer.

Example:

What is the relationship between paragraphs 2 and 3 in the passage?

- (A) comparison
- (B) introduction
- (C) cause and effect
- (D) question and answer

Multiselect Items

For these items, choose **more than one** correct answer from the answer choices, and fill in the bubbles for **more than one** correct answer. Be sure to read the item carefully to know how many correct answers to choose.

Example:

Select the two correct meanings of the phrase good to go as it is used in the sentence.

"Students who live far apart, students who can't leave home, students who want to take a class they can't take nearby—all they need is a computer and an Internet connection and they're good to go!"
(paragraph 6)

- Ⓐ okay to leave
- Ⓑ able to learn quickly
- Ⓒ able to begin
- Ⓓ prepared to travel
- Ⓔ ready to start to learn

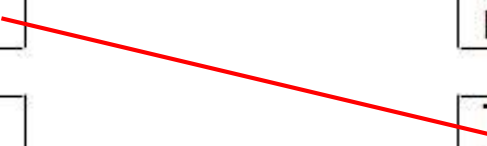
Graphic Response Items

For these items, enter your response by **drawing lines** between matching words or phrases. Drawing lines is the correct way to enter your answer **ONLY** for the items that ask you to do this.

Example:

Draw lines to match the words with the correct definitions based on information in the passage.

Sun	A satellite that revolves around the Earth.
Moon	The star at the center of the Solar System.



Editing Tasks

For editing items, choose the correct word or phrase to fill in each blank in a passage.

For each blank, fill in the bubble **before** the correct word or phrase.

Choose the correct word or phrase to fill in each blank in the passage. For each blank, fill in the circle **before** the word or phrase that is correct.

Koalas are animals that live in Australia. They _____ [A look B will look C looks D looked] a little bit like small bears, _____ [A or B nor C because D but] they are not bears. They are brown or gray, with round, fluffy ears, and they have no tails. You have probably seen pictures of koalas. They are very popular because they are so cute.

Two-Part Items

- The two parts of the item may be either **multiple-choice** (one correct answer) or **multiselect** (more than one correct answer), so be sure to read the item carefully to know how many correct answers to choose.

Part A

Fill in the circle **before** the sentence that shows how the author supports the idea that students who live far from each other can learn together.

- Ⓐ She tells about why students should learn online.
- Ⓑ She shares details about the way students learn online.
- Ⓒ She gives examples of how online learning helps students.
- Ⓓ She explains that the online classroom is only for a short time.

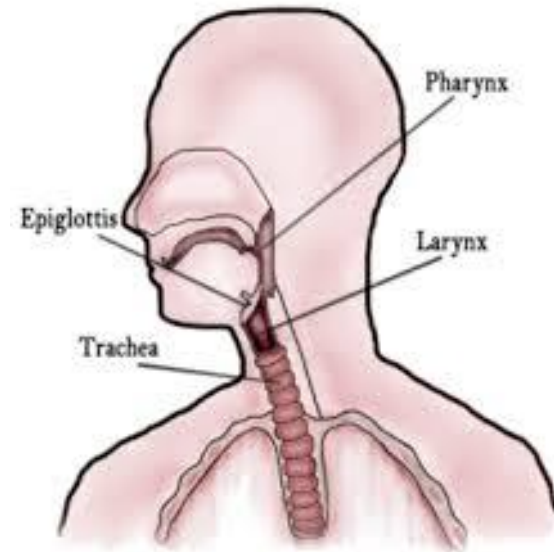
Part B

Fill in the circle **before** the two sentences that support the answer in part A.

Ⓐ It is also possible for students to live in different places and be a part of an online class together. Ⓑ Each person goes to a website for the class he or she is taking. Ⓒ Thousands of people can watch and listen to this class at the same time. Ⓓ When they want to speak, they can use a microphone to ask and answer questions. Ⓔ When the lesson is completed and all good-byes have been said, the students and teacher in the online class log out. Ⓕ The connection over the Internet is broken, and the online classroom disappears.

Multimedia

Technology-enhanced content may include multimedia elements such as audio clips, slideshows, or animations. Multimedia elements may appear within passages (stimuli) or test items.



Multiselect Items

For these items, choose **more than one** correct answer from the answer choices, and fill in the bubbles for **more than one** correct answer. Be sure to read the item carefully to know how many correct answers to choose.

Example:

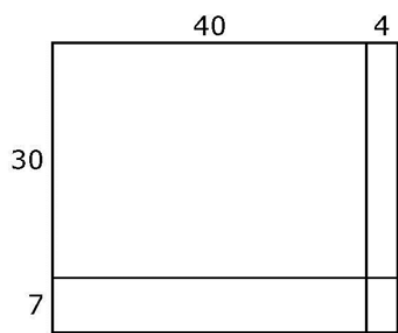
Select **all** the expressions that have the same value as $30 \div 10$.

- A 1×3
- B $10 \div 30$
- C 30×10
- D $30 \div 10 \div 1$
- E $30 \div (2 \div 5)$
- F $(30 \div 2) \div 5$

Two Part Equation Items

Some equation items have **two parts**. For a **two-part equation item**, such as the one to the right, be sure to enter your answer for **each part** of the item.

An area model is shown.



• Create a multiplication expression that you could use to find the area of this model.

$(40+4)(30+7)$

• What is the total area, in square units, of the model?

1628

Scores for the 2017-2018 assessments will be released in **June 2018**

Parents/families can request a black and white paper score report from the school in August after score reports have distributed:

- Overall score for each subject
- Student's Achievement Level
- Percentile Rank
- More specific content-area scores

- Florida law defines Level 3 as indicating “**satisfactory** performance” (s. 1008.22(3)(e)1., F.S.)
- Florida law also states that “a student **passes** an assessment if the student achieves a level 3, level 4, or level 5” (s. 1008.34(1)(a), F.S.)
- Level 3 is also defined as “**passing**” in State Board Rule (6A-1.09422, F.A.C.)

- Focus on the Florida standards
- Digital learning push
- “Cold Read” Assessments with DBQs
- Progress Monitoring in all subjects
- FSA Style Questions on Assessments
- Close Reading in all content areas
- FSA Review Practice Packets


- fsassessments.org
- bealearninghero.org
- raisethebarparents.org
- achievethecore.org
- FLStandards.org – Florida Standards resources, parent guides and the “We Can Do This, Florida!” video series



 Students & Families

 Test Administration

 Technology Resources

 About the FSAs

Welcome to the FSA Portal

This portal is your source for information about the Florida Standards Assessments.

Florida's K-12 assessment system measures students' achievement of Florida's education standards, which were developed and implemented to ensure that all students graduate from high school ready for success in college, career, and life. Assessment supports instruction and student learning, and test results help Florida's educational leadership and stakeholders determine whether the goals of the education system are being met.


For information about FCAT 2.0 or NGSSS EOC Assessments, please visit <http://www.fldoe.org/accountability/assessments/k-12-student-assessment>.

For more information about Florida standards, course descriptions, and standard resources, please visit www.cpalms.org.


FDOE on Twitter

Tweets


 Follow


 **FL Dept of Education** @EducationFL
Congratulations to this year's outstanding school volunteers! #edFL bit.ly/1o2TWGX 1h

 Administer the FSA

 Secure Browser

 FSA Resources

 Practice Tests

 Online Reporting System (ORS)

 TIDE

 Visit FDOE

1. Ask about school and visit teacher website on a daily basis.
2. Help infuse what is being learned in class at home.
3. READ with children at least 30 minutes each day. Students can then use the books read at home, and take tests at school using Accelerated Reader (AR) program.
4. Use computer websites:
 1. Power School– keep up-to-date with student progress
 2. i-Ready
 3. ThinkCentral.com
 4. DE Techbook

Florida Statewide Assessments Spring 2018 Testing Times

Next Generation Sunshine State Standards (NGSSS) Assessments				
Reading Retake and Science				
Subject	Number of Days of Testing	Number of Sessions	Minutes per Session	Total Minutes per Assessment
Reading Retake	2	2	Up to half of the school day	Up to two half school days
Grade 5 Science*	2	2	80	160
Grade 8 Science*	1	2	80	160
End-of-Course Assessments				
Subject	Number of Days of Testing	Number of Sessions	Minutes per Assessment**	
Biology 1	1	1	160	
Civics	1	1	160	
U.S. History	1	1	160	

FSA End-of-Course Assessments				
Subject	Number of Days of Testing	Number of Sessions	Minutes per Session**	Total Minutes per Assessment**
Algebra 1	2	2	90	180
Geometry	2	2	90	180

Thank you for coming!

7:00 – 7:30 PM

- Biology EOC (215)
- 7th Grade Civics (Gym)
- 5th & 8th Grade Science FCAT (Cafeteria)

7:35 - 8:00 PM

- Algebra/Geometry EOC (Room 240)